

# Google Earth, Primary Sources, and Literary Journeys

[http://flare.ucf.edu/FLaRE\\_Presentations.htm](http://flare.ucf.edu/FLaRE_Presentations.htm)

---

## Primary Sources

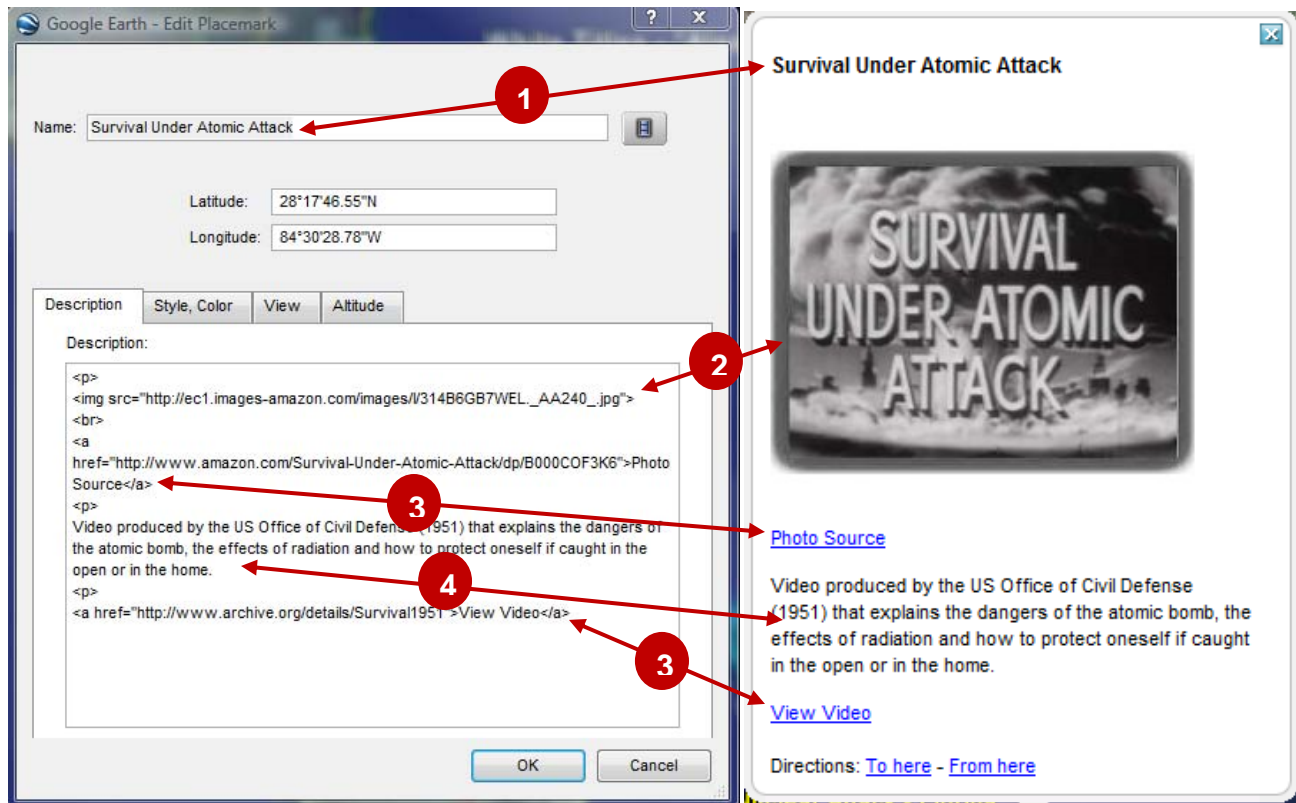
- Florida Memory Project <http://www.floridamemory.com/>
- Library of Congress <http://www.loc.gov/index.html>
- National Archives and Records Administration <http://www.archives.gov/>
- Our Documents <http://www.ourdocuments.gov/>
- The Authentic History Center <http://authentichistory.com>
- Eyewitness: History Through The Eyes Of Those Who Lived It  
<http://www.eyewitnesstohistory.com/>
- Maps ETC <http://etc.usf.edu/maps/>
- Historical Maps [http://www.lib.utexas.edu/maps/historical/history\\_americas.html](http://www.lib.utexas.edu/maps/historical/history_americas.html)
- Making of America <http://www.hti.umich.edu/m/moagrp/>
- New York Public Library Digital Library Collection <http://www.nypl.org/digital/>
- Thomas (LOC) – Legislative Information on the Internet <http://thomas.loc.gov/>
- ArtCyclopedia <http://www.artcyclopedia.com/>
- The American Presidency Project <http://www.presidency.ucsb.edu/index.php>
- The National Security Archive: <http://www.gwu.edu/~nsarchiv/>
- National Park Service – Links to the Past: <http://www.cr.nps.gov/>
- On-line Archival Collections - Center for Women's History & Culture:  
<http://scriptorium.lib.duke.edu/women/digital.html>
- Ad Access <http://scriptorium.lib.duke.edu/adaccess>
- Primary Sources on the Web <http://www.eduplace.com/ss/hmss/primary.html>
- Primary Source Digital Archives and Collections From the Chico High School Library  
<http://melvil.chicousd.org/primary.html>
- Repositories of Primary Sources <http://www.uidaho.edu/special-collections/Other.Repositories.html>
- US Historical Census Data Browser <http://fisher.lib.virginia.edu/census/>
- The American Civil War <http://homepages.dsu.edu/jankej/civilwar/civilwar.htm>
- World War II Resources <http://www.ibiblio.org/pha>
- Euro Docs: Online Sources for European History:  
[http://eudocs.lib.byu.edu/index.php/Main\\_Page](http://eudocs.lib.byu.edu/index.php/Main_Page)
- USPTO Patent Applications <http://www.uspto.gov/patft/>
- Using Primary Sources on the Web <http://www.lib.washington.edu/subject/History/RUSA/>

## Google Earth

- Google Earth Homepage <http://earth.google.com/>
- Google Earth for Educators [http://www.google.com/educators/p\\_earth.html](http://www.google.com/educators/p_earth.html)
- Google Lit Trips <http://www.googlelittrips.com/>
- Google Earth for Teachers <http://techchicktips.net/wiki/tiki-index.php?page=Google+Earth+for+Teachers>
- “The Sightseer” (Google Earth’s Monthly Newsletter)  
[http://earth.google.com/sightseer\\_signup.html](http://earth.google.com/sightseer_signup.html)
- Google Earth Education Community <http://edweb.tusd.k12.az.us/dherring/ge/googleearth.htm>
- Google Earth Community <http://bbs.keyhole.com/ubb/ubbthreads.php/Cat/0>

# Google Earth, Primary Sources, and Literary Journeys

[http://flare.ucf.edu/FLaRE\\_Presentations.htm](http://flare.ucf.edu/FLaRE_Presentations.htm)



1. Whatever is typed in Name box appears as top line of popup in Bold.

2. To insert an image.

Code used: ``

3. To hyperlink to other online sources.

Code used: `<a href="url">linked text</a>`

4. Can simply type text

5. Can use html code

To bold a word or phrase use `<b>` before the word/phrase and `</b>` immediately after

Ex: `<b>This would give this</b>` → **This would give this**

To italicize a word or phrase use `<i>` before the word/phrase and `</i>` immediately after

Ex: `<i>This would give this</i>` → *This would give this*

Can be used together:

Ex: `<b><i>This would give this</i></b>` → ***This would give this***

Also:

`<p>` inserts a blank line between sentences

`<br>` inserts a line break, but no blank line between sentences.